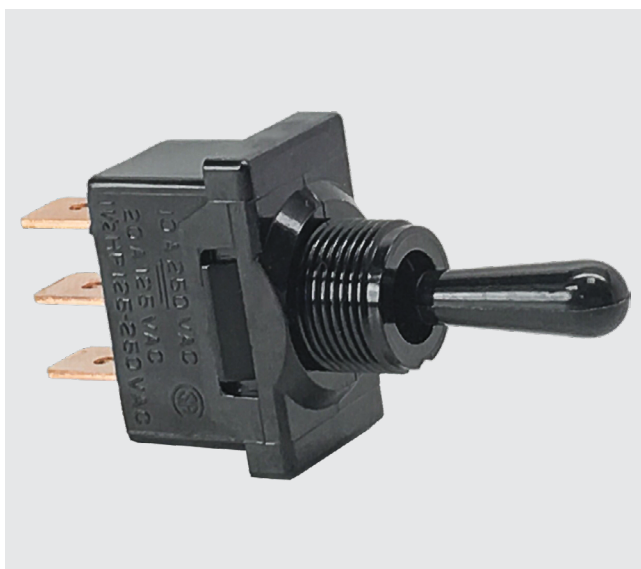


D-Series

D-Series

SINGLE POLE TOGGLE SWITCHES

The D-Series single pole compact high current toggle switches are ideal for applications with back panel size constraints. These switches feature self-cleaning contacts and ratings up to 20A 125VAC, 10A 250VAC, 1 1/2 HP 125-250VAC. With an economical double insulated all nylon construction, these switches figure prominently in markets with stringent current carrying requirements.



Product Highlights:

- Compact all nylon double insulated construction
- Ratings to 20A 125VAC, 1.5 HP 125-250VAC
- Integrated wire lead construction
- Paddle or Bat style actuators

Typical Applications:

- Environmental Controls
- Marine
- Food Service
- Vacuum Cleaners



Dielectric Strength

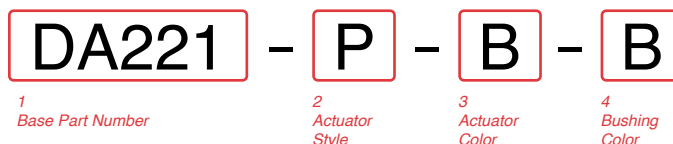
UL/CSA: 1000V - live to dead metal parts & opposite polarity
 TUV: 4000V - live to dead metal parts; 750V - across open contacts

Electrical Life

50,000 cycles

Operating Temperature

32°F to 185°F (0° to 85°C)



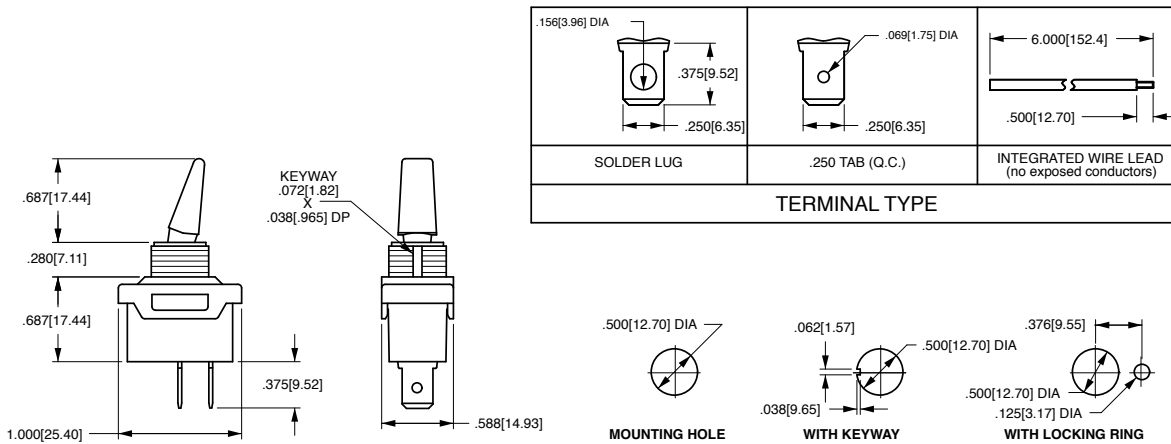
1 BASE PART NUMBER: SERIES / CIRCUITRY / RATING ¹ / TERMINATION			
10A 250VAC, 20A 125VAC, 1 1/2 HP 125-250VAC			
	Solder Lug	.250 Tab	Wire Leads
On-None-Off	DA220	DA221	DA225
On-None-On	DB220	DB221	DB225
On-Off-On	DC220	DC221	DC225
5A 250VAC, 10A 125VAC, 1/2 HP 125-250VAC, 4(4) 250VACµ TUV approved			
	Wire Leads	Solder Lugs	.250 Tabs
On-None-Off	DA945	DA940	DA941

2 ACTUATOR STYLE	
B Bat	P Paddle

3 ACTUATOR COLOR ²	
B Black	W White

4 BUSHING COLOR ²	
B Black	W White

Notes:
 1 DA945 available with wire leads and ON-OFF circuit only.
 2 Additional colors available. Please consult factory.



*Manufacturer reserves the right to change product specification without prior notice.